

R-TileTM | Retail

Flooring Solutions

Design Collection

Wood

R-Tile a Product Range brought to you by

R-TekTM
Manufacturing

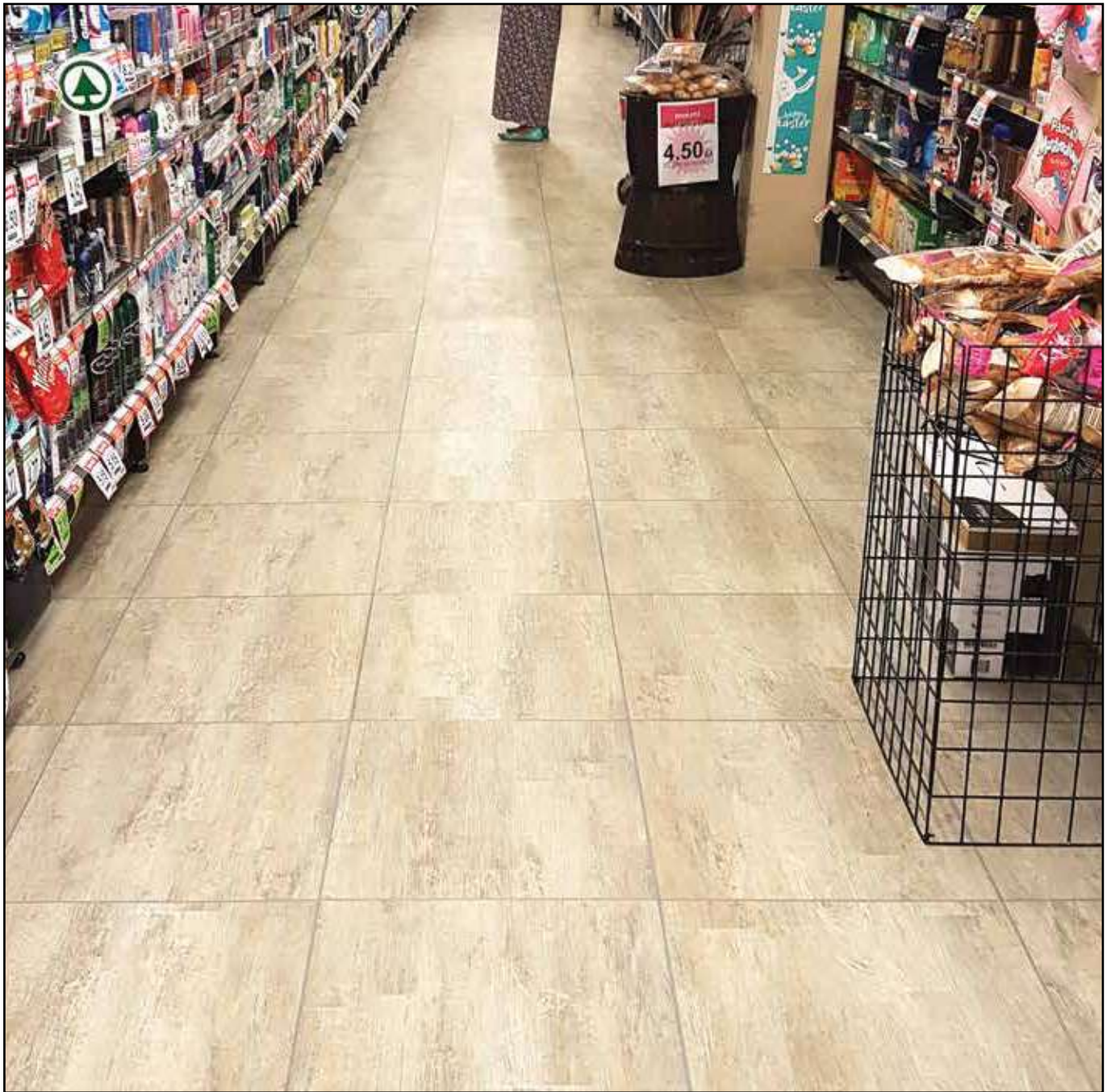
Patented new generation of robust, hidden interlock, loose lay LVT. Available in modern designs and with unique colour matching moulded grout edging.



Vintage Sand

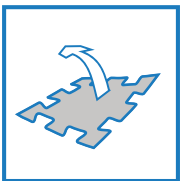
Dimensions

■ 457mm x 457mm (inc. 2mm grout edging) ■ 7.8mm Thickness ■ 0.7mm wear layer with PU



Vintage Maple

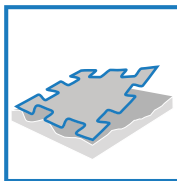
Product Details



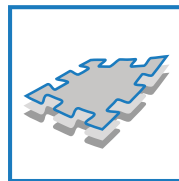
Loose lay - No adhesive required



Robust hidden interlock - Suitable for wheeled traffic up to 1000kg



No subfloor preparation - Can be installed over existing floor coverings, also poor and uneven sub floor



High dimensional stability - Heterogeneous construction with glass fiber reinforcement



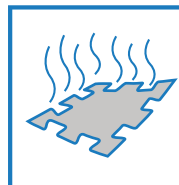
Improves acoustic performance - Providing significant noise reduction.



No need to interrupt daily business activity - No loss of revenue



Excellent anti fatigue properties - Comfortable to walk and stand on.



Low VOC emissions meet AgBB requirements, DIBT (Germany) and all indoor air quality (France) (A* label)

Designs can be combined to create unique floors



Vintage Ash



Dark Oak



Light Oak/Granite

Grout Edging Colours



Black



Light Grey



Brown

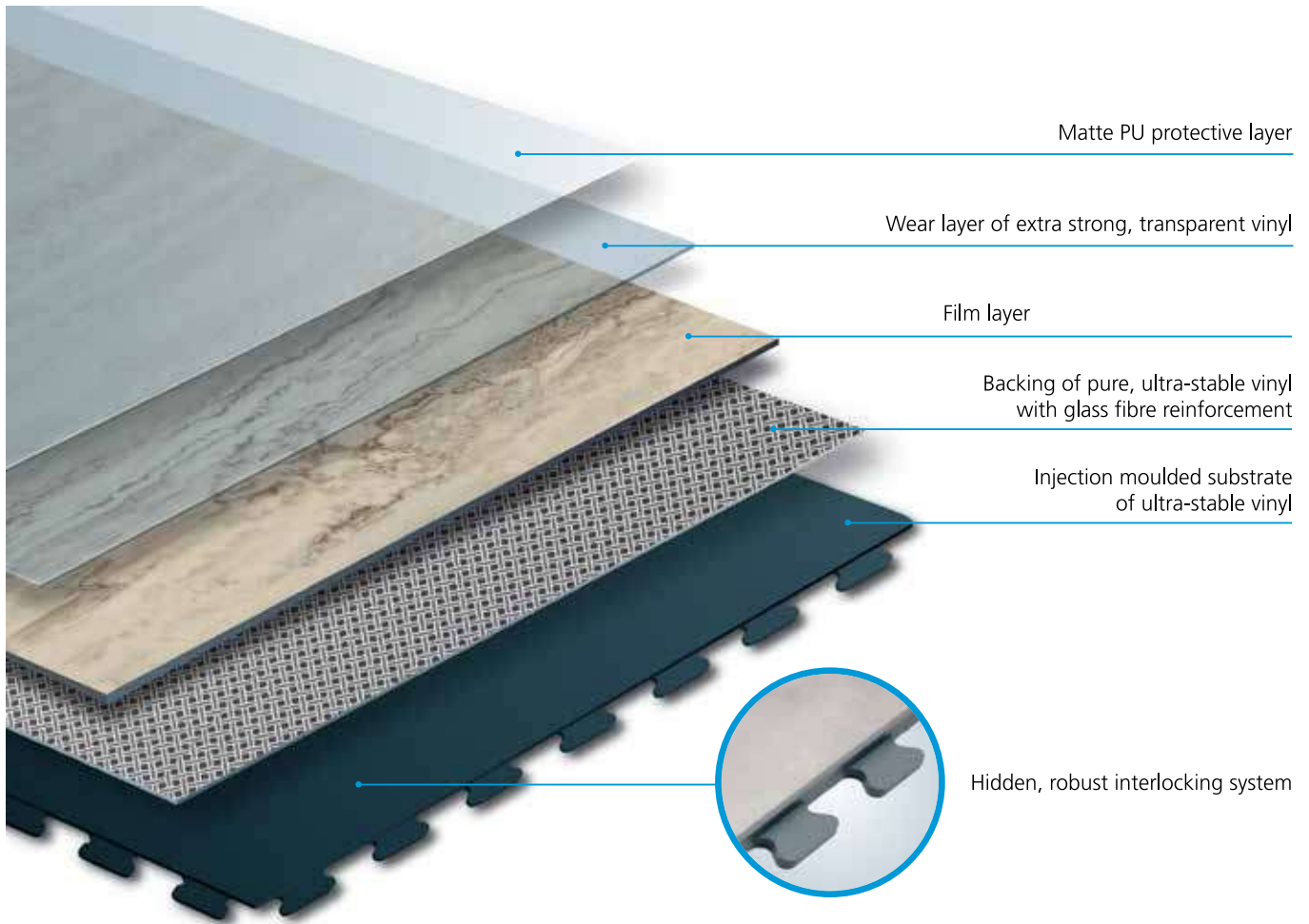


Profile Edge



Ramp Edge

Product Construction



Matte PU protective layer

Wear layer of extra strong, transparent vinyl

Film layer

Backing of pure, ultra-stable vinyl with glass fibre reinforcement

Injection moulded substrate of ultra-stable vinyl

Hidden, robust interlocking system

Installation & Cleaning



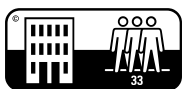
Loose lay -
No adhesive required
Installation instructions
available on request.



Easy replacement
or repair of
individual tiles



Easy cleaning and
maintenance due
to PU coating



CE EN14041:2004



EN 14041,
EN 13893



EN 105-802



EN 430



EN 433



EN 1815



EN 423



EN 429



EN 423



EN 427
EN 994



EN 425



EN 428



EN 660-1
EN 660-2



EN 13501-1



EN 423

Specification

TECHNICAL SPECIFICATION	NORM	DESIGN TILE
Floorcovering to EN 649		Heterogeneous PVC
Tile Dimensions		457mm x 457 mm
Weight	EN430	9.6kg/m ²
Hardness	ISO868	92 Shore A
Material		PVC SGI 1.45
Thickness	BS EN 428	7.8mm
Wearing Layer	BS EN 429	0.7mm + Polyurethane
Protective Layer		Polyurethane Matt Finish
Usage Class	EN 685	Heavy Commercial/light Industrial
Castor Wheel	BS EN 425	No Damage
Indentation	BS EN 433	0.05mm
Fire Class	EN 13501 -1	BFL s1
Surface Resistance	BS EN 1081	Horizontal: >1.0 x 10 ⁴ Ω Vertical: 1.1 x 10 ¹² Ω
Anti Slip	BS EN 13893 Deutsche Norm DIN 51130	R9/R11
Chemical Resistance	BS EN 423	Good
Light Fastness [Blue Wool Standard]	BS EN 105-B02	6-8 Dependent on design
Thermal Resistance	ISO 8302	+/- 0.013m ² K/W
Anti-Static Performance	BS EN 1815	Rubber sole: -1.0kV PVC sole: -1.7kV
Dimensional Stability Before Exposure to Heat	BS EN 434	Yes
Density	BS EN 436: 1994	Average 1404kg/m ²
Surface Treatment	PUR	PUR
Toxicity	EN71	Non-Toxic
VOC Emissions	AgBB/DIBt	Certified

Recyclable

The R-Tek range of tiles are environmentally friendly, once they have reached the end of their useful life we can collect the tiles and recycle them to produce the next generation of R-Tile. There is also no wastage in the manufacture of R-Tiles as any rejected tiles and surplus material is recycled on site.

BRE - Green Guide Ratings A+



259 Battleford Road,
Benburb
Co.Tyrone, BT71 7NP

T: +44 (0)28 3751 0367
F: +44 (0)28 3751 0801
E: info@r-tekmanufacturingltd.com
W: www.r-tekmanufacturingltd.com